

**K30** Series  
GUIDE BOOK



## K30 Series

No further worry  
between product quality and price! K30

Weight Balance Tilting naturally adjust  
the tension of the backrest and seat in response  
to the user's weight.

Despite the various functions, we provide you  
with highly reasonable price to offer you the good  
opportunity to sit on the very comfortable chair.

### INDEX

Function	5
Material & Variation	6
Color Chart	7
Assembly Guide	8
User Guide	10





K30 Series



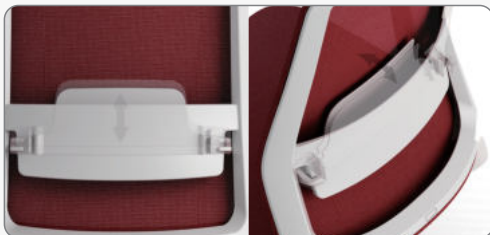
krede

**ADJUSTABLE HEADREST**

- Height adjustment (60mm)
- Tilting

**ADJUSTABLE LUMBAR SUPPORT**

- Height adjustment
- Natural tilting

**WEIGHT BALANCE TILT MECHANISM**

Tilting tension of backrest is automatically adjusted according to the user's weight, and the backrest offers 4-level tilting angle adjustment for optimal comfort.

**3D ADJUSTABLE ARMRESTS**

- Height (70mm)
- Sideways
- Forward / Backward

**ADJUSTABLE SEAT**

- Seat depth adjustment (60mm)

**BASE & CASTER**

K30 is using engineering plastic starbase and urethane casters.



## K30

## TASK CHAIR



K30A



K30B



K30A-BS



K30B-BS

<b>HEADREST</b> - PA + GF30 frame - PU leather upholstered urethane foam.	●		●	
<b>BACKREST</b> - PA + GF30 frame - PE mesh upholstery	●	●	●	●
<b>ARMREST</b> - PA+30GF frame - PU foam pad	●	●	●	●
<b>LUMBAR SUPPORT</b> - PA frame - PU foam pad	●	●	●	●
<b>SEAT</b> - PP + GF30 frame - Fabric upholstered urethane foam	●	●	●	●
<b>GAS CYLINDER</b> - Optional stroke : 70mm / 110mm - Class 4	●	●	●	●
<b>BASE , CASTER</b> - 350 nylon base - 60mm PU caster	●	●	●	●
<b>DIMENSION</b>	W650 x D590 x H1160	W650 x D590 x H1010	W650 x D590 x H1160	W650 x D590 x H1010



# K30 task chair



## HEADREST

artificial leather



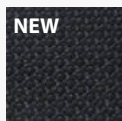
BLACK  
DL001-38



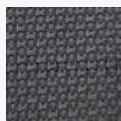
L GRAY  
DL001-05

## BACKREST MESH

VERONA series  
WINTEX



NEW  
BLACK  
VE-00



CHARCOAL \*  
VE-92



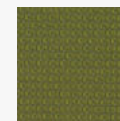
L. GRAY  
VE-53



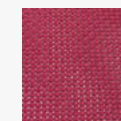
INDIGO \*\*  
VE-88



L. BLUE \*\*  
VE-28



GREEN \*\*  
VE-59



RED \*\*  
VE-56

\* VE-92 color will be valid until 2023.

\*\* This color is not under stock.  
Lead-time shall be discuss before placing order.

## SEATREST FABRIC

HY68 series



BLACK  
HY6804B



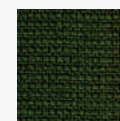
GRAY  
HY6801B



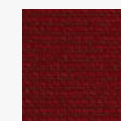
BLUE  
HY6849B



BLUE GRAY  
HY6836B

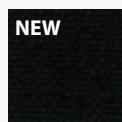


GREEN  
HY6859B



RED  
HY6827B

HY19 series



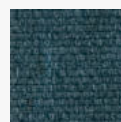
NEW  
BLACK \*\*\*  
HY193B



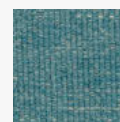
CHARCOAL \*\*\*  
HY193 \*\*\*\*



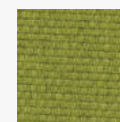
GRAY  
HY192



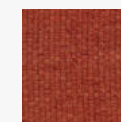
BLUE  
HY190



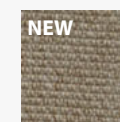
SKY BLUE  
HY5028



GREEN  
HY194



RED  
HY191

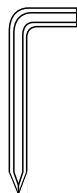


NEW  
BEIGE  
HY5016

\*\*\* Fabric color names are changed to  
match mesh color.  
- HY193 : BLACK → CHARCOAL  
- HY193B : PURE BLACK → BLACK

\*\*\*\* HY193 color will be valid until 2023.

**Headrest Parts**



**A**  
Allen Wrench



**B**  
M6x12 (2)

**Backrest Parts**



**C**  
M8x20 (3)

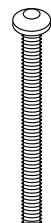


**D**  
M8x13x2 (3)



**E**  
M8x20x2 (3)

**Armrest Parts**

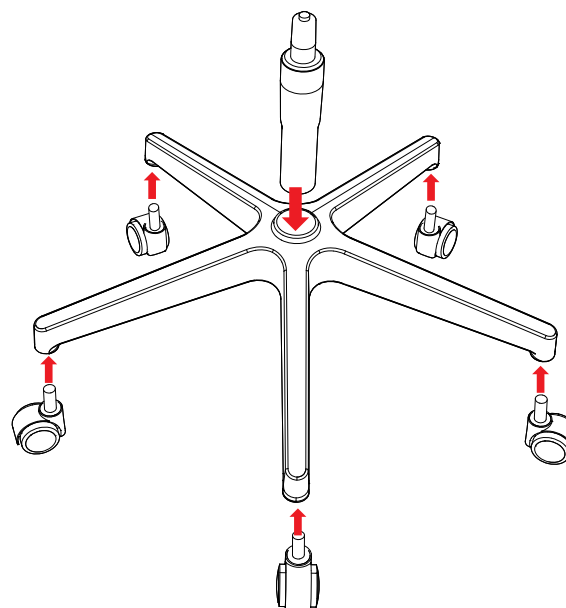


**F**  
M6x55 (4)

**step 01**

**Base and Gas Cylinder Assembly**

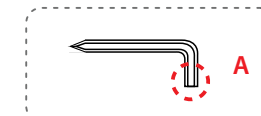
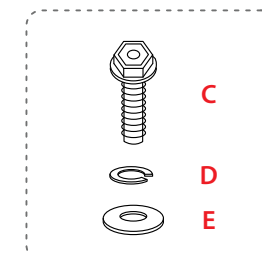
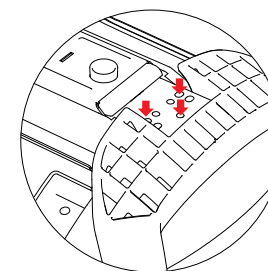
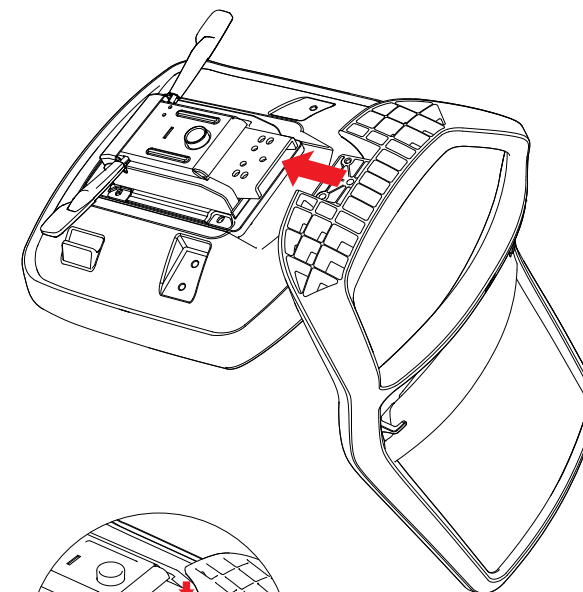
Put gas cylinder onto the base.



Assemble casters onto the base.

**step 02**

**Backrest and Armrest Assembly**

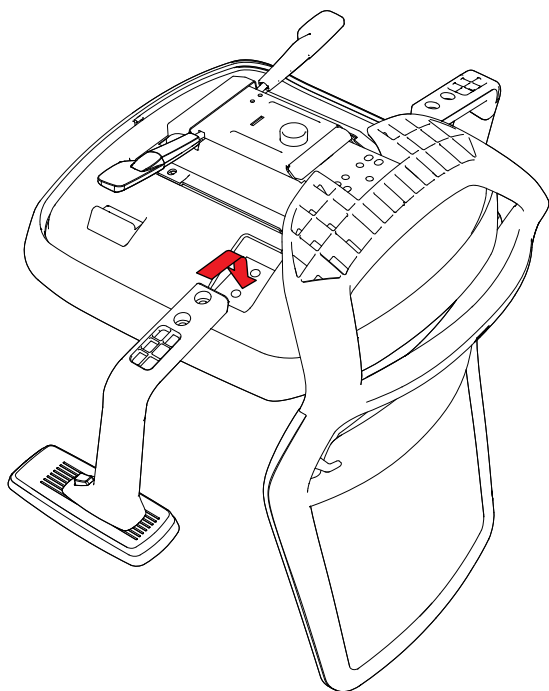


Assemble back-rest and tilt tightening bolts in order.  
(C→D→E)  
Tighten bolt using wrench (A).



## step 03

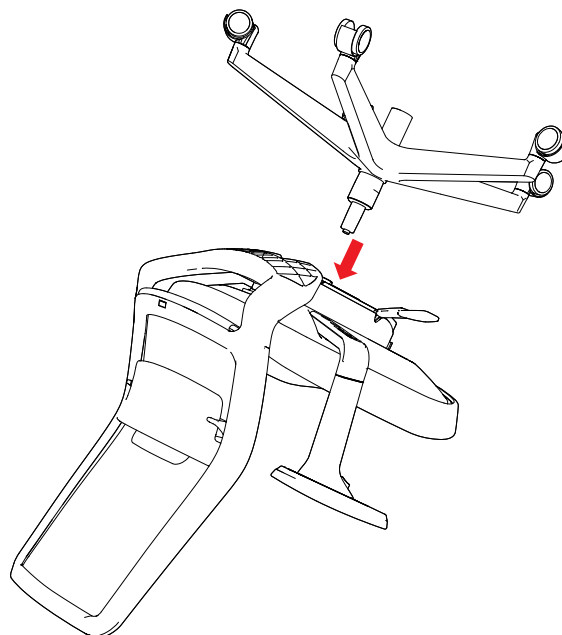
## Armrest Assembly



Assemble arm-rests and back-rest using bolts (F) as above image. Tighten bolt using wrench (A).

## step 04

## Base and Body Assembly



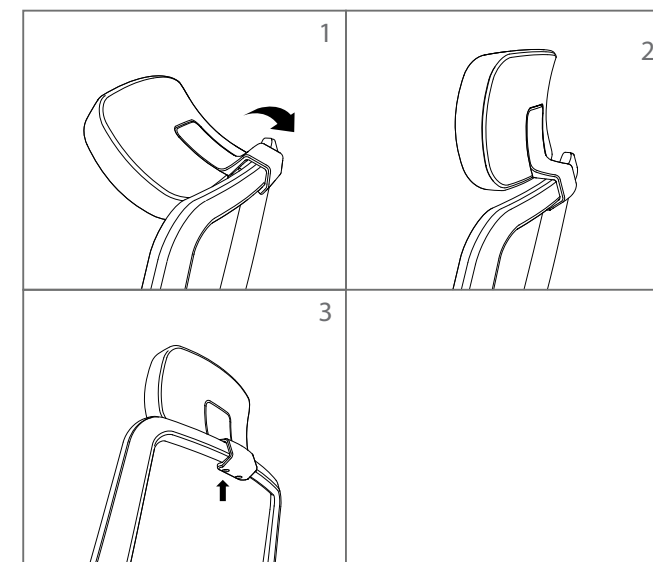
Complete the assembly of the seat and armrests and then connect with gas cylinder by putting it into the hole of tilt mechanism underneath the seat.

Assembly following as above image is recommended.

When the base is assembled, cautiously stand the chair upright.

## step 05

## Headrest Assembly \*\*



Assemble the headrest connector on the middle of the backrest frame and rotate the headrest upright.



Assemble the head-rest and back-rest using bolts. Tighten bolts using the side marked with red dotted line.

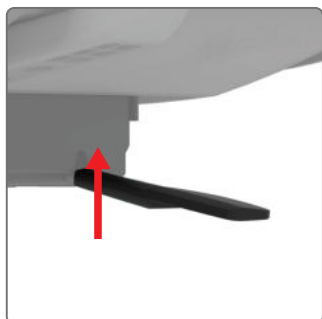
## Synchronized Tilt Mechanism & Seat

### Weight Balance Tilt



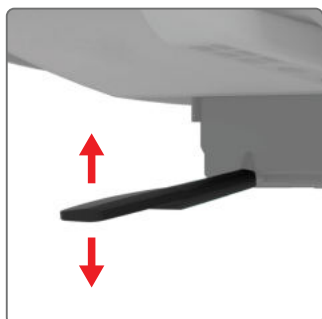
Tilting tension of backrest would be adjusted according to user's weight.

### Height Adjustment



Push up the flat lever on your right side to adjust the height.  
If you adjust the lever while standing, the seat goes up and the seat goes down while sitting.

### Angle Adjustment



Backrest can be fixed at the preferred position by raising the lever upward on the left side.  
For unlocking, push the lever downward and slightly push the backrest backward. (Anti-shock function)

## Headrest

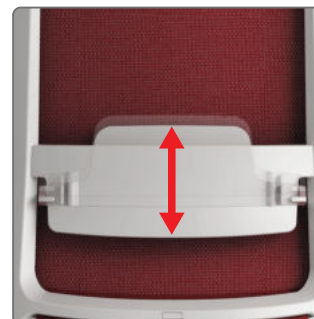
### Height Adjustment



Adjust the height by sliding the headrest up and down.  
Elastic tilting will add more comfort to this adjustable feature.

## Lumbar Support

### Height Adjustment



Adjust the height by putting the lever up and down.

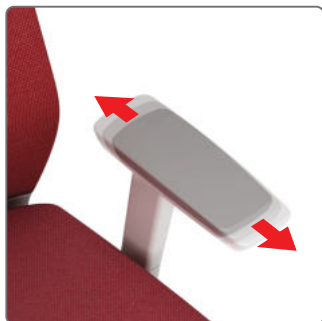
## Armrest

### Height Adjustment



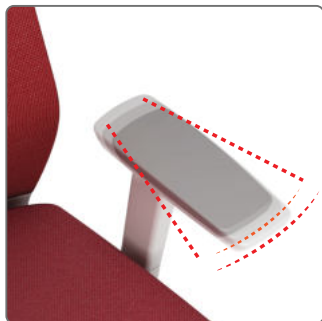
Adjust the height while pushing the buttons underneath the arm pad.

### Forward&Backward Adjustment



Arm pads can be adjusted in front and back.

### Sideways Adjustment



Arm pads can be adjusted in sideways.

## Seat

### Depth Adjustment



Adjust the seat depth by pulling the lever underneath your right-side seat. While pulling the lever, you can slide the seat forward to make it deep. To return to the original position, slightly stand up and pull the lever again.

## Warning

01. Do not use the chair for the purpose other than it originally meant to be.
02. Please be advised that the warranted weight capacity of the chair is 113kgs or less.
03. If you put excessive impact on the chair while tilted, it may be damaged.
04. Leaning on unfolded chair from behind could fold the chair and lead to injuries.
05. Do not press the backrest while someone is seated on the chair.
06. Do not push the chair when someone is seated.
07. Please do not use each chair more than two person.
08. Take care to avoid inserting your feet into the spaces of the seat.
09. Excessive weight may result in overturn and cause damage.
10. Do not put or insert your finger in to any part of the chair.
11. Do not put your finger into the gap of the chair.
12. Avoid using the product while front of the seat is lifted.
13. When seating, please do not tilt your body left/right excessively.
14. Do not use the chair for exercise such as push-ups.
15. Do not throw the chair.
16. Do not kick the chair.
17. Do not walk across the chairs.
18. Please get full knowledge for usage of the chair beforehand for more proper use.
19. We do not apply any warranty for any possible injuries, dangers and damages caused by neglect of the above warnings.

## CERTIFICATIONS



# krede

A417, 25, Beobwon-ro 11-gil, Songpa-gu, Seoul, Korea  
T 82 2 6254 5432  
F 82 2 6254 5433  
sales@krede.co.kr

[www.krede.co.kr](http://www.krede.co.kr)